

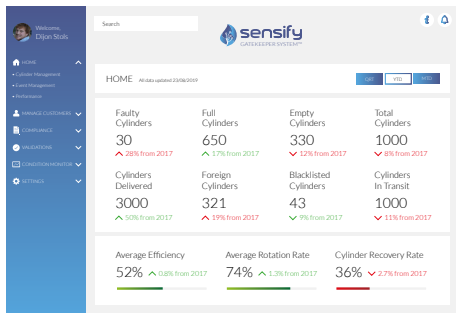


1 Lyric Square
London
W6 0NB
United Kingdom

E: sales@sensify.net

Unit 3956, Waterfall Country
Estate, Juskaei View, Ext 40,
Midrand, Johannesburg,
South Africa

T: +27 82 375 7955



OUR INNOVATION, YOUR SOLUTION

The Sensify Gatekeeper System (SGS) delivers a revolutionary solution giving LPG companies worldwide unparalleled control over their cylinders for the first time, thereby eradicating theft and piracy and ensuring safety and customer loyalty, whilst analysing and optimising operations.

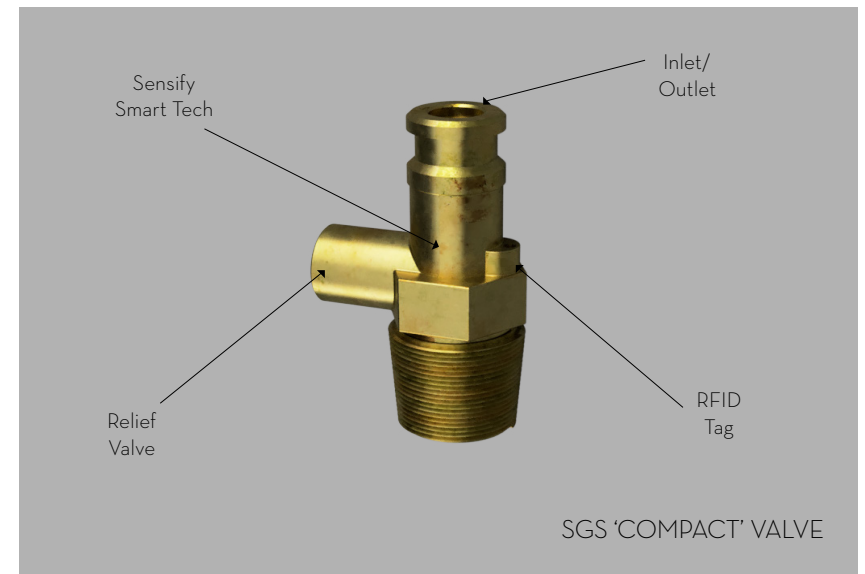
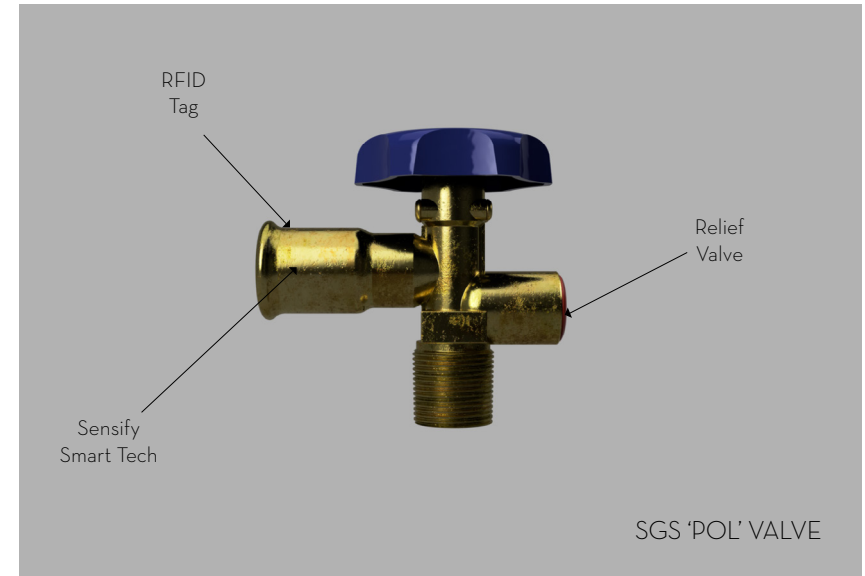
SGS is a world-leading combination of mechanical, electronic, software and radio frequency engineering. It delivers a unique 'lock and key' system that secures cylinders with its tamper-proof valve, featuring built-in RFID technology, that can only be unlocked by specialist filling nozzles controlled by a secure cloud-based application.

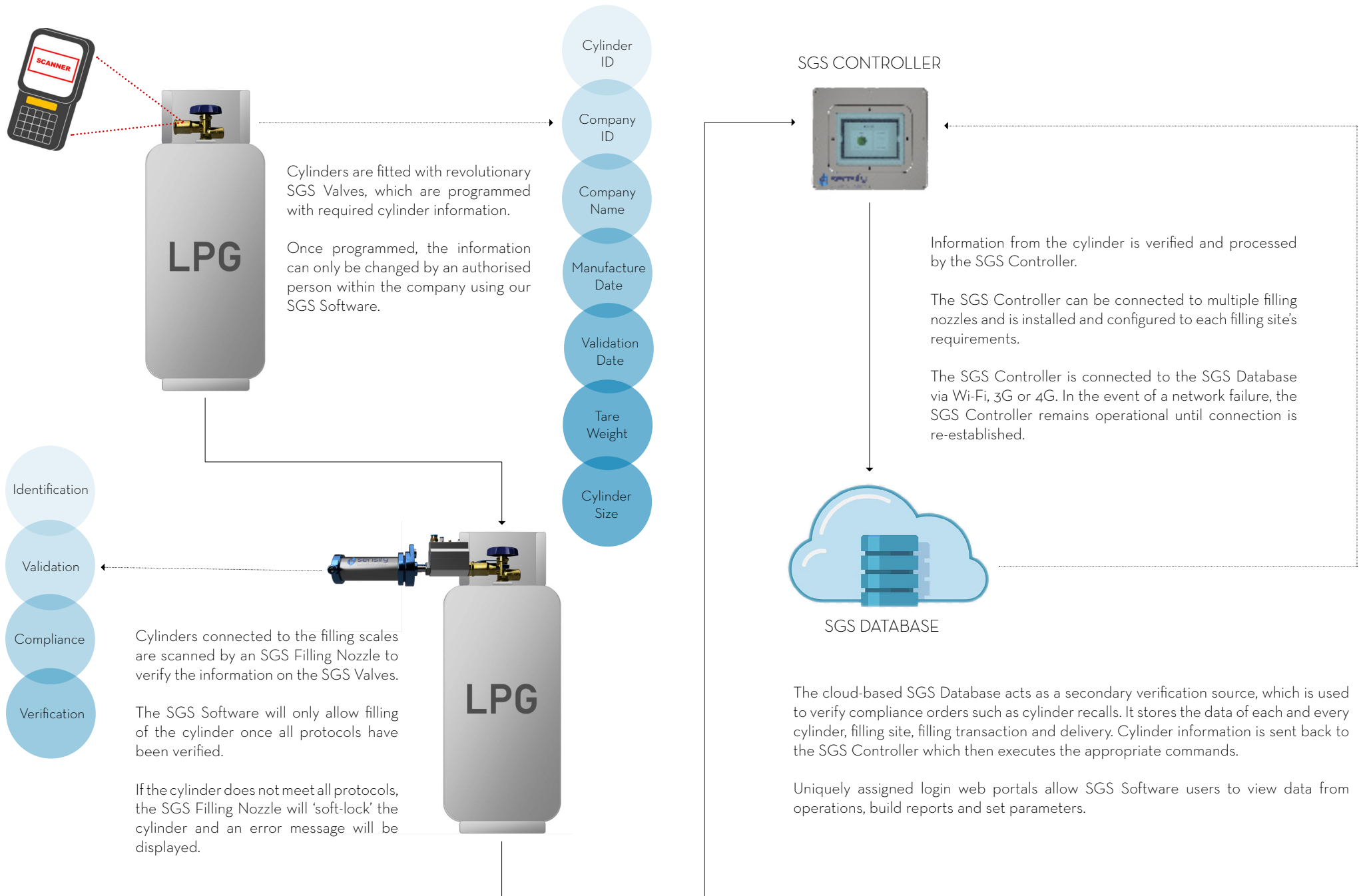
SMART, SAFE AND SECURE

SGS enables LPG companies to track in realtime the life cycle of their cylinders from global supplier depots, filling sites, distributors and re-sellers. It also enables LPG companies to block the filling of any of its cylinders, wherever they are in the world, therefore rendering them useless if they have been stolen or if a rogue filler attempts to use them. This realtime tracking functionality, allows enforced servicing or removal of cylinders from the market, ensuring the safety and compliance of all of the company's LPG cylinders.

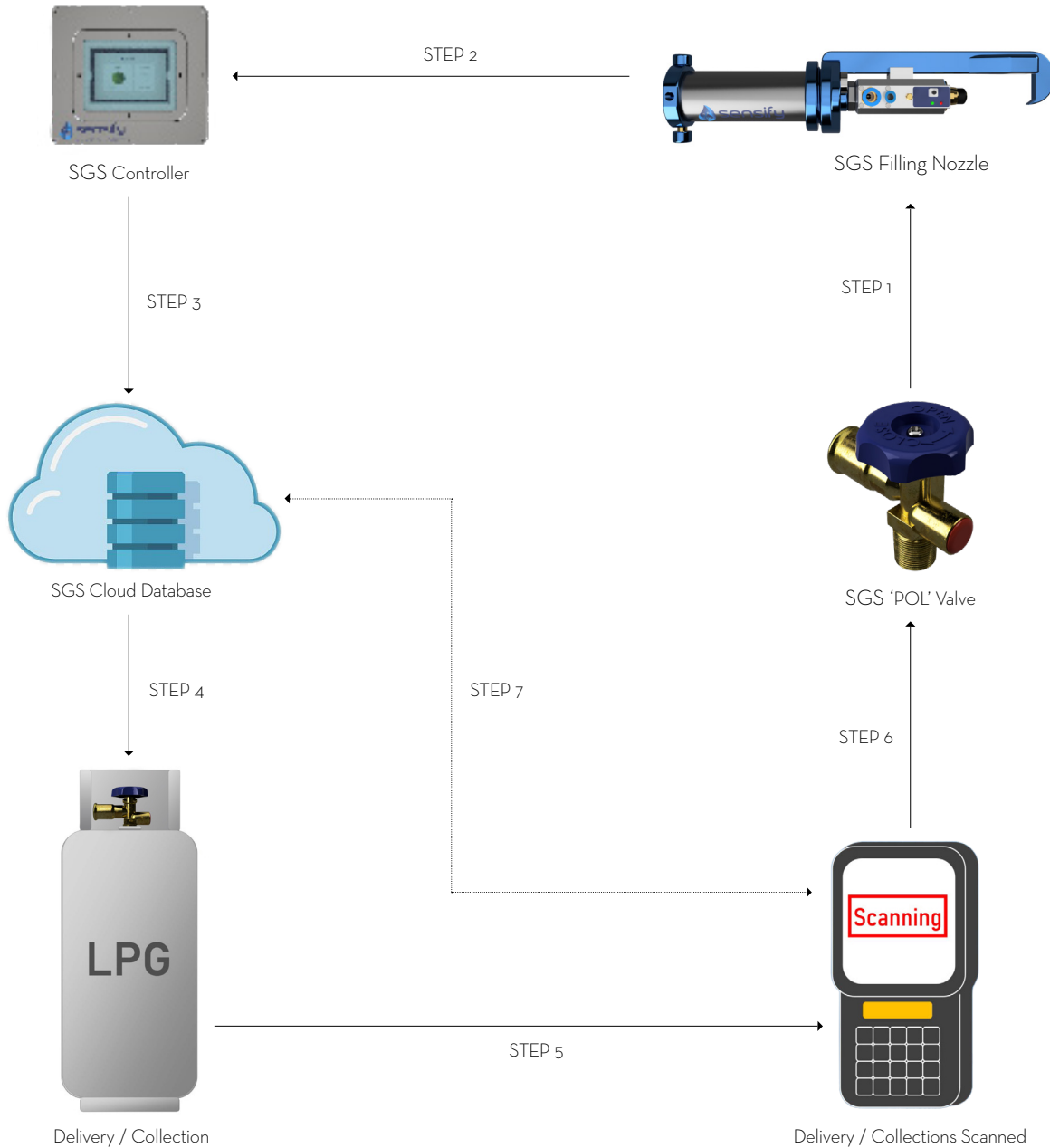
The SGS Software provides users with recommendations for optimisation and increased performance. Our software is a standalone solution that can be integrated with all ERP and accounting software programs.

HOW DOES IT WORK?





FROM FILLING TO DELIVERY



- STEP 1** Cylinders installed with SGS Valves are connected to an SGS Filling Nozzle which reads the built-in tamper-proof RFID tags.
- STEP 2** The information is sent to the SGS Controller for verification and access is either granted or denied.
- STEP 3** The SGS Controller sends the completed filling transaction to the SGS Cloud Database.
- STEP 4** The SGS Cloud Software updates the filled cylinder status and the system confirms to the user that it is ready for dispatch.
- STEP 5** The filled cylinder is loaded and delivered to the customer.
- STEP 6** The customer's details are entered on delivery and the cylinder is scanned. Empty cylinders are scanned and upon return to the filling depot their validation / maintenance record is checked before being approved for refilling.
- STEP 7** All data is updated to the SGS Cloud Database in realtime.



Validation Control

This takes full control of the cylinder maintenance in order to ensure customers always receive a properly maintained, full cylinder.

Validation Control records:

- Exactly who serviced the cylinder
- When it was last serviced
- What has been done to the cylinder

It also sets enforced validation / maintenance periods by 'soft locking' the cylinders when they are due.



Compliance

The SGS Software allows full control for users to set and enforce their filling operations standards, for example:

- The removal of their old cylinders from the market by way of a simple recall order
- The recall of faulty cylinders by entering the cylinder details
- The ability to set and enforce compliance / maintenance standards across different filling stations



Access Control

Through the increase of cylinder circulation rate by securing, tracking, recovering and maintaining cylinders, users can reduce the number of new cylinder purchases thereby increasing profits effortlessly.

Users can:

- Prevent rogue fillers and cross filling
- Prevent the filling of invalidated cylinders



Manage Cylinder Rotations

Not only does the SGS Software increase profitability by ensuring an increase in cylinder rotations, it allows the user to manage and monitor cylinder rotation rates to ensure cylinders that are more often filled and used, are regularly inspected and checked for safety.

FEATURES & BENEFITS



Customer Delivery

The SGS Software assigns the cylinder's ID to the customer, stores the customer's information and the delivery location. The delivery is then confirmed by the customer's signature.



Condition Monitoring

The SGS Software monitors equipment remotely and provides users with the ability to schedule routine maintenance thereby eliminating downtime and maintaining maximum productivity.



Customer Value Monitoring

The SGS Software calculates the value of each customer regionally by monitoring customer usage over a determined period through cylinder deliveries and combines this data with the total regional deliveries to evaluate an area's market value in relation to the volume of LPG consumed.

- HOME
 - Cylinder Management
 - Event Management
 - Performance
- MANAGE CUSTOMERS
- COMPLIANCE
- VALIDATIONS
- CONDITION MONITOR
- SETTINGS

HOME All data updated 23/08/2019

Customer Market Monitor

Germiston 310 ↑ 18.4% from 2017	Kempton Park 189 ↓ 23% from 2017	Benoni 700 ↑ 0.8% from 2017
Edenvale 470 ↓ 9.7% from 2017	Boksburg 630 ↑ 11.3% from 2017	

Condition Monitoring

40% Utilisation

Active Errors

E01: Unregistered Cylinder
E03: Cylinder Validation Due
E04: Active Recall Order

Important Events

A01: In Transit Warning
A03: Limited Supply Available
A04: Possible Cylinder Shortages

OPERATIONS

Provision

Fill

Blacklisted

Decommissioned

DASHBOARD

The dashboard has been designed for ease of use which enables users to access detailed information effortlessly by fast navigation showing realtime displays regarding its current operations.

THE CLOUD

The SGS Software is entirely cloud-based which provides users with peace of mind and access over multiple devices.

MANAGEMENT DASHBOARDS

Each filling station is assigned with its own account, unique username and password. Each user dashboard displays only its own performance and information.

The user's primary filling station's 'Management Dashboard' displays the content of all of its filling stations which enable it to assess each individual site's performance, customer deliveries, when cylinders are due for validation etc. in order to maximise efficiency and profits.

PERFORMANCE INDICATORS

Performance indicators are displayed on the Dashboard. Data from current operations are compared to previous periods to calculate whether a company / distributor is underperforming or exceeding previous periods.

STOCK LEVELS

Cylinder Validations

↓ 50% Circulating Cylinders	Cylinders currently in circulations with no validation requirements
↓ 25% Validations Required	Validations required due to expiration or exceeding cycle limits
↑ 25% Validations In Progress	Cylinders currently in validation

LAST REFILLS

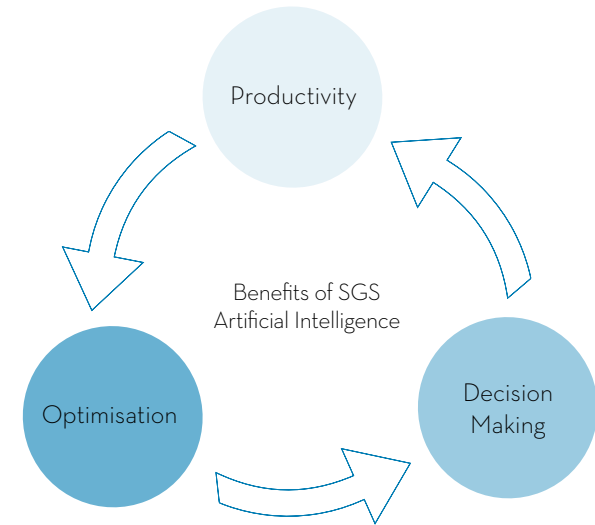
Date	Depot	Cylinder
04/03/2022 10:37:44	Córdoba	0124002000E57C0B0619E400
04/03/2022 9:04:01	Córdoba	0124000000E5760424197F00
04/03/2022 8:57:45	Córdoba	0124000000E5760424197F00
04/03/2022 8:56:16	Córdoba	0124002000E57C0B0619E400

DASHBOARDS & ANALYTICS

 <p>Customer Profiling</p>	<p>The user can view customer consumption patterns in order to establish their LPG usage requirements, demographics and therefore value to the company.</p>
 <p>Cylinder Activity Analysis</p>	<p>The user can view customers' consumption over designated periods in order to determine regional peak and off-peak consumption patterns.</p>
 <p>Forecasting</p>	<p>Accurately forecast when the next scheduled delivery should be and when cylinder shortages will occur.</p>
 <p>Average Cylinder Rotations</p>	<p>View the rotation rate of individual cylinders or the average rotation rate of a combined fleet and the factors that influence cylinder rotations.</p>
 <p>Market Segmentation</p>	<p>SGS verifies and provides detailed reports on the user's high volume consumption areas, most active regions, declining regions and customer preferences within the supply chain.</p>

DEVELOPMENT ROADMAP

BESPOKE SGS AI SOFTWARE



ADDITIONAL SENSIFY PRODUCTS





1 Lyric Square
London
W6 0NB
United Kingdom

E: sales@sensify.net

Unit 3956, Waterfall Country
Estate, Juskaei View, Ext 40,
Midrand, Johannesburg,
South Africa

T: +27 82 375 7955